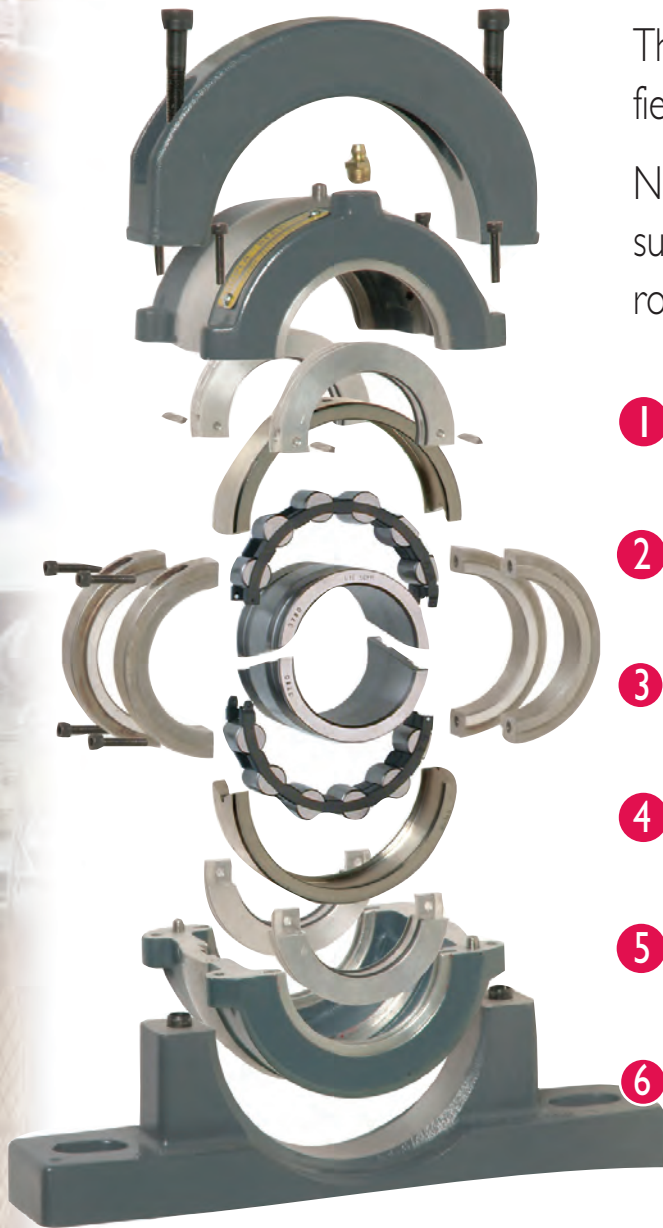


# 6 Reasons Why Cooper E Series Bearings Give Superior Performance



The Cooper E Series bearing is the leader in its field offering up to 240% increase on L10 Life.

No other split roller bearing matches the superb performance offered the Cooper split roller bearing.

- 1 Longer Life - up to 240% based on radial net load.
- 2 Higher Load Rating - increased capacity up to 30%.
- 3 Easy clip-lock cage for speedy assembly and maintenance.
- 4 Uses existing Cooper O1 Series cartridges and pedestals.
- 5 Superior sealing provides optimum performance in hostile environments.
- 6 Available to fit shaft sizes 35mm (1 3/4") up to 105mm (4").

## Bearing Life Comparison

Bearing Rating	C (kN)	Load (kN)	RPM	fn	fd	fk	fl	L10 (Hours)
Cooper	134	10	500	2.253411	1.2	1.0	4.96	103,732
Copy Product	103	10	500	2.253411	1.2	1.0	3.81	43,154

### Same Speed, fn, fd, fk Used for all Loads

Shaft Diameter (mm)	Group Size	Copy Product Load Rating (kN)	Cooper Load Rating (kN)	Increased Capacity	What Does this mean in terms of L10 Life	Net Radial Loads Used for Selection (kN)	Based on this net radial Load Cooper gives an increased L10 Life over copy product of:	or at 8,000 hours per year, an increased L10 Life of:
45/50	200	83	95	15%		7.2	157%	4.5 Years
60/65	208	103	134	30%		10	240%	7.6 Years
70/75	300	138	165	20%		12.5	182%	5.5 Years
80/85/90	308	187	228	22%		17.2	135%	6 Years
100/105	400	288	315	10%		23.5	135%	3.35 years

# Features & Benefits

Dimensionally Interchangeable with Cooper 01 Series Bearing

Uses existing cartridge and housing.

Increased Load Ratings

Longer operational life with higher safety margins.

Self Locking Steel Cage

Increased operating temperature range. Lower maintenance costs with simple assembly.

No small components to remove, replace or lose.

Split to the Shaft Bearing

Installed without moving adjacent equipment or machinery.

Low cost of installation.

Ease of replacement.

Reduces downtime.

Increases maintenance efficiency.

Comprehensive Range of Mountings

Meets most application requirements from the standard range.

Pedestals available in steel, grey iron and nodular iron including: flanges, rod end bearings, take-up bearings and custom bearings.

Superior Concentric to the Shaft Sealing

Reduces contamination.

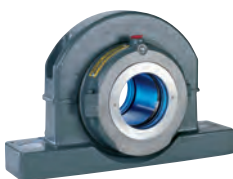
Retains lubrication.

Prolongs bearing life.

Proven range of sealing options.

## E Series Bearing Mounting Options

### PEDESTALS



#### Pedestal Unit

1 3/8"/30mm to 24"/600mm  
Available in cast iron  
nodular iron or steel

### HANGER MOUNTINGS



#### Hanger Unit

1 3/8"/30mm to 5 1/2"/140mm  
Available in cast iron

### TAKE UP AND ROD END MOUNTINGS



#### Take Up Tension

1 3/8"/30mm to 6"/155mm  
Available in cast iron  
Also offered as  
push type



#### Rod End Shoe

1 3/8"/30mm to 6"/155mm  
Available in cast iron  
Also offered as  
tee type

### FLANGE MOUNTINGS



#### Round Flange Units

1 3/8"/30mm to 12"/300mm  
Available in cast iron  
or steel



#### Square Flange Units

1 1/8"/50mm to 3"/75mm  
Available in cast iron,  
nodular iron or steel

## Customer Service Centres

### UK, Africa, Asia, Australasia and the Middle East

Cooper Roller Bearings Co Ltd  
Wisbech Road  
King's Lynn  
Norfolk PE30 5JX  
England.  
Telephone +44 (0) 1553 763 447  
Fax +44 (0) 1553 761 113

### Europe and South America

Cooper Geteilte Rollenlager GmbH  
Postfach 100 423  
Oberbenrader Str 407  
47704 Krefeld  
Germany.  
Telephone + (49) 2151 713 016  
Fax +(49) 2151 713 010

### USA and Mexico

The Cooper Split Roller Bearing Corp.  
5365 Robin Hood Road, Suite B  
Norfolk, VA 23513  
USA  
Telephone 757 460 0925  
Fax 757 464 3067

### Canada

Cooper-Grainger Canada Inc  
5875 Coopers Avenue  
Mississauga  
Ontario L4Z 1R9  
Canada  
Telephone 905 890 2266  
Fax 905 890 2269